



**World Leading**

Metal Wood Grain Chair Manufacturer



**METAL WOOD GRAIN  
START YOUR BUSINESS  
WITH  
LOTUS HOSPITALITY  
PRODUCTS**



# WHAT IS METAL WOOD GRAIN CHAIR?

Actually, Metal wood grain is a special technology that people can get the solid wood texture on the surface of metal.

First, it need to cover a layer of wear-resistant powder coat on the surface of metal. Second, the paper printed with wood grain texture is covered on the powder. Third, the wood grain on the paper will be transferred to the powder by heating. After the above 3 steps, we can get the effect of metal wood grain on the metal surface.

From a metal frame to a finish metal wood grain chair



1  
Metal frame



2  
Tiger powder  
Coat layer



3  
Covered metal wood  
Grain paper



4  
Finished metal wood  
Grain chaie

LHP cooperated with Tiger Powder Coat, an international famous powder coat brand which is professionally produced metal powder. So LHP's Metal Wood Grain is clearer, and more than 3 times durable than the similar products in the market.



## COMPARISON METAL V.S. METAL WOOD GRAIN V.S. SOLID WOOD

	Metal Chair	Metal Wood Grain Chair	Solid Wood Chair
Price	Cheap	Cost effective, same quality level, 40% - 50% price of solid wood chairs	Expensive
Value	×	It is more valuable because there are a lot of manual production	✓
Solid wood texture	×	✓	✓
Strength	Connected by welding	Connected by welding, the frame can be used for 10 years	Easy to loose due to the combination of wood tenon
Stack	✓	Can stack 5-10 pcs, save 50-70% transfer and storage cost	×
Light Weight	✓	50% lightweight than same quality level solid wood chairs	×
Environment Protection	✓	No Tree cut down, recycle material	×
Antibacterial and antivirus	✓	Without holes will not breed bacteria and viruses	×

**Metal Wood Grain Chair is not a traditional metal chair.** It is more valuable because there are a lot of manual production. At the same time, because Metal Wood Grain Chair has solid wood texture, it can meet people's desire to return to nature.

# METAL WOOD GRAIN CHAIR AN EFFECTIVE EXTENSION OF SOLID WOOD CHAIR IN MARKET & CUSTOMER GROUP

Metal Wood Grain Chair combine the advantages of metal chairs and solid wood chairs, 'higher strength', '40% - 50% of price', 'solid wood texture'. When a potential customer who recognizes your brand of high quality, but can't afford the high price of solid wood chair, Metal Wood Grain Chair with high quality but low price will be a good option.

Prepare your hot sale products in two different material, solid wood and metal wood grain. Recommend solid wood chair or Metal Wood Grain Chair according to your customers' budget. As the price of same quality level metal wood grain is only 40-50% of solid wood chair. Therefore, without changing the quality standards and brand positioning, the customer group and market have been effectively extended.

## \$0 AFTER-SALES COST FREE YOU FROM ANY AFTER-SALES WORRIES



Actually Metal Wood Grain Chair is metal chair, so it is as high strength as metal chair. Besides, it connects different tubing by welding, which will not be loosen and crack as solid wood chair when there is change of humidity and temperature in the air.

Meanwhile, all LHP' s Metal Wood Grain Chairs pass the strength test of ANS / BIFMA X5.4-2012 and EN 16139:2013 / AC:2013 level 2. It can bear more than 500 pounds. Meanwhile, LHP provides 10-years frame warranty to all chairs. Within 10 years, if there is any quality problem of the frame, LHP will replace a new chair for you.

### TO PROVIDE A 10-YEARS FRAME WARRANTY?

#### 1. Higher grade aluminum

When most of manufacturer in the industry uses 6063 standard alumi-num, LHP has taken the lead use of 6061, the higher grade aluminum, which can make the hardness is improved more than 2 times.

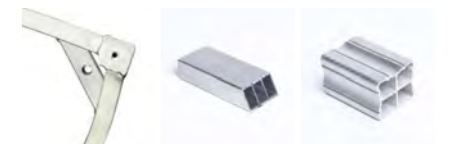
#### 2. Enough thickness

The thickness of LHP Metal Wood Grain Chair is more than 2.0 mm, and the stressed parts is even more than 4.0 mm.

#### 3. Patented tubing & structure

All Yumeya's Metal Wood Grain Chair adopts LHP patented tubing & structure - Reinforced tubing & Built in structure. The strength is at least doubled than the regular.

# 6061



## METAL WOOD GRAIN CHAIR CAN SHORT THE RETURN ON INVESTMENT CYCLE

How do you sell Metal Wood Grain Chair? First of all, Metal Wood Grain Chair has an obvious advantage, it can effectively shorten the investment return cycle of your customers. Why?



Low price

Same quality level, **50-60% cheaper** than solid wood chair



Low operating cost

---LHP special stacking technology can stack **5-10 pcs high**, which can save more than **50-70% of the cost** whether in transportation or daily storage.

---**50% lightweight** than same quality level solid wood chairs, no special requirements for staff. **Even a girl can move easily.**



Low maintenance cost

---**10 years frame warranty**, no need to replace costly furniture.

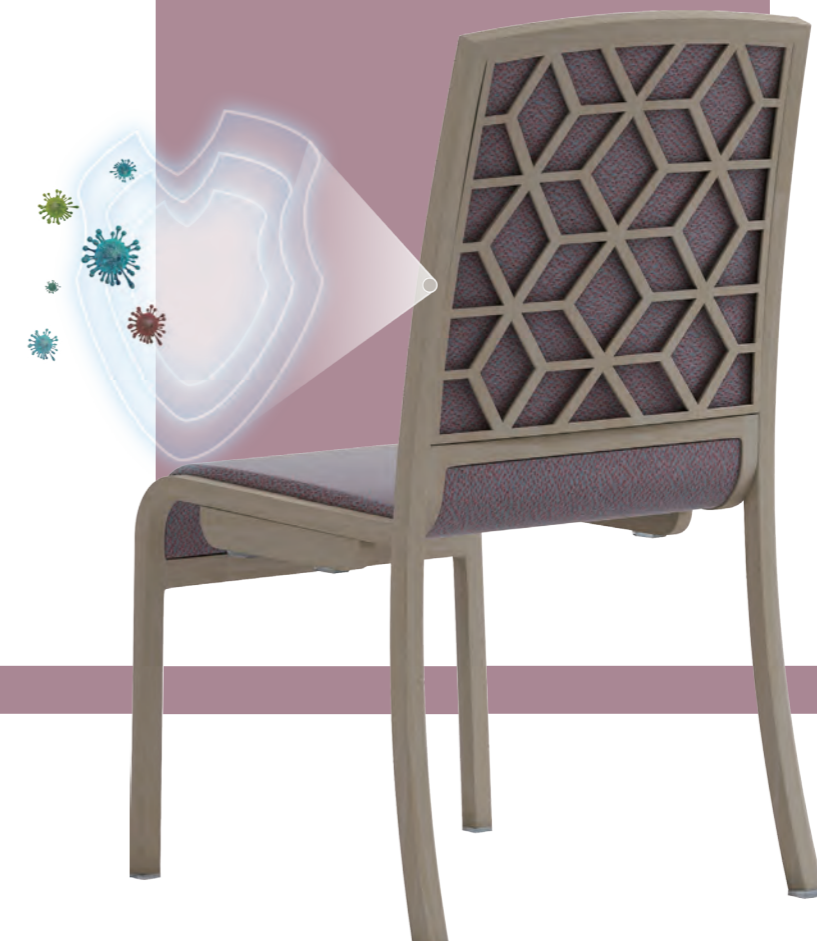
---**Easy clean**, no watermark will be left and any spillage can be easily wiped off.

---Lasting durability, using Tiger Powder coat, **3 times wear-resistant**, won't get banged up.

## WITH ANTI BACTERIAL & VIRAL PROPERTIES, METAL WOOD GRAIN CHAIR IS AN IDEAL FURNITURE IN THE CONTEXT OF COVID-19

The continuation of COVID-19 will require additional anti-virus demand for furniture. As Metal Wood Grain Chair has no holes and no seams, it will not support the growth of bacteria and viruses. Meanwhile, since 2017, LHP start the cooperation with Tiger Powder Coat, a world famous powder. It is 3 time durable. Therefore, even if a high concentration (undiluted) disinfectant is used, LHP Metal Wood Grain will not change color. Combined with effective cleaning programs, it can effectively prevent the spread of bacteria and viruses. In addition, Metal Wood Grain is very easy to clean and will not leave any water stains.

In the context of COVID-19, Metal Wood Grain Chair is an ideal product for a commercial place to keep safety, especially for Nursing Home, Assistant living, Healthcare, Hospital and so on.



## ENVIRONMENT FRIENDLY

As a member of nature, human beings have a natural desire to be closer to nature. Solid wood chairs can make people close to nature, but also inevitably bring tree cutting and environmental damage. But metal wood grain can bring people the texture of solid wood without cutting down trees. At the same time, metal is a recyclable resource and will not cause any pressure on the environment.



## ACTION NOW, METAL WOOD GRAIN CHAIR WILL USHER IN GREAT DEVELOPMENT IN 2022

The continuation of COVID-19 had changed everything. And there are two changes that we must pay attention to.

### 01 Furniture requirements

The first requirements for most commercial furniture are durable and easy to clean. However, due to the continuation of COVID-19, the primary requirement of commercial furniture change to anti bacteria and anti virus. The customers only conduct consumer behavior when they can ensure their safety.

### 02 Cautious consumption

Because of the continuation of COVID-19, it has leded the economic downturns and uncertain prospects. We have to admit that in such an economic environment, people's consumption will become very cautious.

Metal Wood Grain Chairs have no holes and no seams, combined with effective cleaning programs, it can effectively prevent the spread of bacteria and viruses. At the same time, as LHP cooperate with Tiger powder coat, an international famous powder coat brand which is professionally produced metal powder, even if a high concentration of disinfectant is used, it will not cause the discoloration of color. Meanwhile, Metal Wood Grain Chairs combine the advantages of metal chairs and solid wood chairs, 'higher strength', '40% - 50% of price', 'solid wood texture'. If a potential customer who recognizes your company's brand of high quality, but can't afford the high price of solid wood chair, Metal Wood Grain chairs with high quality but low price will be a new option. Metal Wood Grain chair is an effective extension of solid wood chair in market & customer group. So we have reason to believe that Metal Wood Grain Chairs will usher in great development in 2022.

# METAL WOOD GRAIN CHAIR, SUITABLE FOR ALL COMMERCIAL PLACES

As a new product, Metal Wood Grain Chair is unfamiliar to most customers. They may not know where metal wood grain can be used. In fact, Metal Wood Grain is suitable for all commercial places.

- 01 Hotel**

  - Banquet hall
  - Ballroom
  - Function room
  - Meeting room
  - Conference room
  - Cafe
  - Lobby
  - Guest Room
- 02 High End Cafe**

  - Steakhouse
  - Seafood Restaurant
  - Revolving Restaurant
  - Buffet
  - Golf Club
  - Social Club
  - Country Club
- 03 Senior Living**

  - Independent Living
  - Assisted Living
  - Memory Care
  - Short-Term Rehabilitation
  - Skilled Nursing
- 04 Healthcare**

  - Hospital
  - Clinic
  - Physician's office
  - Behavioral Health

- 05 Education**

  - University
  - Library
- 06 Casino**
- 07 Office**
- 08 More**

For the above different commercial places, LHP has different kind of chairs, such as side chair, arm chair, barstool, bariatric, patient, guest, bench, lounge, sofa in various designs.



# WITH MORE THAN 20 YEARS METAL WOOD GRAIN CHAIRS MANUFACTURE EXPERIENCE, IS THE RIGHT SUPPLIER FOR YOUR NEW BUSINESS

In 1998, Mr. Gong, the founder of this patented line, developed the first Metal Wood Grain Chair, opening a new area. Since then, wood grain paper overlap problems existed for a long time. At that time, the size of the overlapping area was uneven, even some of the bottom powder was not covered with wood grain texture. In order to solve the problem, after a lot of attempts, in 2011, LHP put forward the concept of one chair one set paper mold, which ensured the wood grain paper was effectively consistent with the metal frame. In 2015, in order to solve the problem of efficiency, LHP cooperated with the equipment factory to develop the first PCM machine. The PCM machine can automatically cut the paper through one-to-one comparison between the frame and wood grain paper, which improves the efficiency by more than 5 times and greatly reduces the cost.

In 2017, LHP cooperated with Tiger Powder Coat, an international famous powder coat brand which is professionally produced metal powder. Since then, LHP Metal Wood Grain is more realistic. Even if you look close, it looks like solid wood. Before 2018, people can only get the wood grain effect on the metal chair visually, but they can't get the wood grain texture tactile. Therefore, after years of research, LHP launched the world's first 3D wood grain technology in 2018. So far, people can get the wood look and touch in a metal chair. Now LHP has become a pioneer in the industry of metal wood grain and led the development of the industry.



## WORLD'S FIRST 3D METAL WOOD GRAIN TECHNOLOGY HELP YOU GET THE WOOD LOOK AND TOUCH IN A METAL CHAIR

Before 2018, people can only get the wood grain effect on the metal chair visually, but they can't get the wood grain texture tactile. After years of research, LHP launched the world's first 3D Wood Grain Technology in 2018.

This is a major innovation and breakthrough. 3D Wood Grain Technology can maximum restore the solid wood texture. You can see and touch the solid wood texture in the surface of a metal chair. And this innovation makes more and more commercial places favor metal wood grain chairs.



## 3 INCOMPARABLE ADVANTAGES OF METAL WOOD GRAIN

### No joint and no gap

The joints between piping can be covered with clear wood grain, without too large seams or no covered wood grain. Now LHP has achieved the effect of one-to-one matching of wood grain paper and frame through PCM machine.

### Clear as real wood grain

There are two key points to get a clear wood grain as real, the powder coat layer and the full touch of the paper and the powder. Through the cooperation with Tiger powder coat, the color rendering of wood grain on the powder is improved, and the wood grain is clearer. Meanwhile, LHP developed a special high temperature resistant PVC mold, which can ensure full contact between wood grain paper and the powder.

For LHP Metal Wood Grain Chair, even if you look closely, you will have an illusion that this is a solid wood chair.

### Durable

Commercial furniture has a greater chance of collision than household furniture, causing both a bad first impression and costly furniture replacement. Therefore, commercial furniture will have special wear resistance requirements.

The wear resistance of metal wood grain is determined by the powder. Based on this, since 2017, LHP started the cooperation with Tiger Powder Coat, a world-famous professional metal powder brand. Now LHP Metal Wood Grain is more than 3 times durable than the similar product in the market. LHP Metal Wood Grain Chair can maintain its good look for years.



# THE QUALITY PHILOSOPHY

## GOOD QUALITY



All LHP Metal Wood Grain Chairs can bear more than **500 pounds** and with **10-years frame warranty**

# SAFETY

A safety chair not only has structural safety, but also details safety. It can free you from the trouble of after-sales service, and make the brand has more connotation.

## Strength safety

All chairs pass the strength test of EN 16139:2013 / AC: 2013 level 2 and ANS / BIFMA X5.4-2012.

### 01

Use 6061 grade aluminum which is the highest level in the industry.

### 02

The thickness is more than 2.0 mm, and the stressed parts is even more than 4.0 mm.

### 03

15-16 degree hardness of aluminum, exceeding the international standard of 14 degrees.

### 04

Patented tubing & structure - Reinforced tubing & Built in structure, the strength is at least doubled than the regular.



## Detail safety

In addition to strength, LHP also pays attention to the invisible safety problems, such as metal burrs that can scratch hands. All LHP chairs shall be polished for at least 3 times and inspected for 9 times before they can be regarded as qualified products and delivered to clients.



# COMFORT

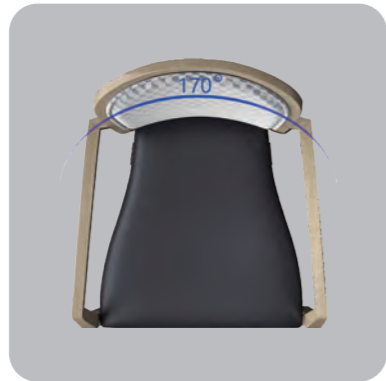
Many years experience in making commercial chairs tells us that a good chair must be comfort. Comfort means that it can bring a comfortable experience to the client and make him feel that the consumption is worth more.

## EVERY CHAIR WE DESIGNED IS ERGONOMIC



### 101 DEGREES

The best pitch of the back makes it nice to lean against.



### 170 DEGREES

Perfect back radian, perfectly fit the back radian of the user.



### 3-5 DEGREES

The suitable seat surface inclination, effective support of lumbar spine of the user.

In addition, we use auto foam with high rebound and moderate hardness, which not only has long service life, but also can make everyone sit comfortably no matter who sits in it, men or women.

# EXCELLENT DETAIL

What is detail? Nuances reflect the ingenuity of a product, which can best reflect the value of a product. When you receive Yumeya's Metal Wood Grain Chair, you will marvel at Yumeya's ingenuity. Every chair looks like a masterpiece.



### Realistic solid wood texture effect

#### 01

Many clients have such a misunderstanding that LHP deliver the wrong goods of solid wood chairs.

#### 02

Daily scratch no way. Cooperated with Tiger Powder Coat, the durability is more than 3 times higher than that of similar products in the market.



### Smooth welded joint

There is no welding mark can be seen at all. It's like being produced with a mold.



### Durable fabric look luscious

#### 01

The martindale of all LHP standard fabric is more than 30,000 ruts.

#### 02

With special treatment, it is easy for clean, suitable for commercial use.



### High resilience foam

65 m3/kg mold foam without any talc, long lifetime, using 5 years will not out of shape.



### Perfect Upholstery

The line of cushion is smooth and straight.

The products with ingenious details can improve the experience and satisfaction of your clients, which can make your sales much more easier.

## THE MOST ADVANCED WORKSHOPS IN THE INDUSTRY THE BASE FOR 25 DAYS QUICK SHIP AND HIGH END QUALITY

Does your Chinese factory faces the problems of 'difficult to recruit workers', 'difficult to manage the workers' and so on? Does these problems make your product quality and delivery time unstable which make you headache?

Since 2018, LHP has been aware of these problems and solved the problem by introducing advanced equipment. At present, LHP has become one of the factories with the most modern equipment in the whole industry.

### 01 Welding Robots

LHP Furniture has 5 Japan imported Welding Robots. It can weld 500 chairs a day, three times more efficient than human. With unified standard, the error can be controlled within 1mm.

### 03 Automatic Transportation Line

the automatic transportation line connects all links of production, which can effectively save the cost and time of transportation. Meanwhile, it can effectively avoid the collision while transport, ensure all products are best protected.

### 05 Testing Machine

LHP has two strength test machine base on the standard of ANS/BIFMA X5.4-2012 and EN 16139:2013/AC:2013 level 2. With 10 years frame warranty, LHP promise to replace a new chair within 10 years if the problem is causing by structure problem.

### 02 Automatic Grinder

polish all welded joints in accordance with uniform standards to ensure that all welded joints are smooth and even, such as integrated forming.

### 04 PCM Machine

automatically cut the paper through one-to-one comparison between the frame and wood grain paper, which improves the efficiency by more than 5 times and greatly reduces the cost.



**2010**

Founden of LHP furntiure

**200+**

Number of workers

**20,000+**

Factory area

**40,000+**

Monthly capacity

## INDEPENDENT QC SYSTEM THE GUARDIAN OF YOUR GOOD QUALITY PRODUCTS

Base on many years international trade experience, LHP deeply understand the particularity in international trade that clients cannot supervise the quality on site. How to reassure customers about quality will be the key point before cooperation. All LHP Chairs will undergo at least 4 department, more than 9 times QC before packaged.



### 01 Hardware Department

Here at least 4 QC are required in this department, 'raw material', 'QC after Bending', 'QC check after welding', 'sampling inspection of finished frames'. Only the process, structure and size of the frame are correct, and the surface of the frame is smooth without metal thorns, it is a qualified product.

### 03 Upholstery Department

Details are the key point to experience high-end quality. Therefore, we can't relax in the upholstery link. After more than 3 times of QC, our cushion are smooth and full, and the foam is comfortable and high rebound.

### 02 Wood Grain Department

The color difference in the same batch is caused by many factors. In order to avoid this problem, we need to conduct quality inspection at least 3 times in this link to ensure the consistency of color.

### 04 Package Department

In this step, we will check all parameters according to the customer's order, including size, surface treatment, fabrics, accessories, etc to make sure it is the right chair that the client order. At the same time, we will check whether the surface of the chair is scratched and clean one by one. Only when 100% of the goods pass the sampling inspection, this batch of large goods will be packed.

### Video Inspection Service

Meanwhile, in order reassure customers,LHP provides unique video inspection service in the industry. You can check the status and progress of your goods through your mobile at any time.

# WELL ORGANIZE IS THE MAIN ARTERY OF THE FACTORY

No matter how much advanced equipment, experienced workers and excellent management team a factory has, only well organize can connect the equipment, workers and team in series and maximize the effect. Therefore, well organize is the main artery of a factory.

## 01 Systematic management concept

In LHP, we think that it is a system to obtain good quality. Like if you want to obtain good surface treatment, there includes three links: pre-processing, intermediate processing and post-processing.

### • Pre-processing

It refers to a smooth frame without burrs. All LHP chairs need to go through four polishing processes before they can formally enter the surface treatment process. Component polishing --- Polishing after welding --- Fine polish for the whole chair--- Polishing after cleaning. After 4 steps, it can achieve good flat and smooth effect.

### • Intermediate processing

It includes material (powder coat), workers, equipment, environment, etc  
 ---Workers: Yumeya's powder coat workers have more than 10 years of experience.  
 ---Powder Coat: Since 2017, LHP cooperated with Tiger Powder Coat, an international famous powder coat brand which is professionally produced metal powder. That is why Yumeya's Metal Wood Grain is more than 3 times durable than the similar products in the market.  
 ---Equipment: LHP adopts electrostatic spraying equipment imported from Germany, which can evenly cover the surface of the frame without accumulation, and improve the utilization rate.  
 ---Environment: Since we adopted electrostatic spraying technology for powder coat finish, it will have very strict requirements on the dust content in the air. LHP will control the dust in the air to a minimum through environmental protection equipment such as water curtain and air purifier. The coating surface is smooth and there are no dust particles.

### • Post-processing

It mainly refers to the baking process, which mainly involves temperature and time. Time and temperature are a subtle combination. Any change in parameters will affect the overall effect, or not wear-resistant, or color different. After years of exploration, LHP has found the best combination of time and temperature to ensure the best wood grain effect.

## 02 Management ability

LHP factory management is in the charge of 3 managers who have worked in this industry for more than 20 years. At the same time, these 3 managers are also one of the investors of LHP, which greatly improves the stability.



Founder of 30 years experience, good at the combination of product practicability and aesthetics.



25 years experience, good at hardware process R & D.



20 years experience, good at research and development of Metal Wood Grain.

## 03 Advanced management means

At present, LHP adopts the industry advanced ERP system to manage the whole production process. At the same time, it will take photos and record data for each order to ensure the correct parameters for future repeat order; Besides, in order to maximize cost control and assist our customers to develop new customers through small orders, LHP also specially separate the line production and management of large orders and small orders.

**LOOK THE SAME, ACTUALLY IT IS NOT THE SAME!  
WE WELCOME YOU HAVE  
A LIVE VIDEO FACTORY VISIT BEFORE PLACING US AN ORDER!**

Any factory has the strength to make one chair, but B2B business does not only buy a good chair. But the problem is that a sample definitely can not effectively and comprehensively reflect the above details, processes and QC. So in LHP, We always tell our customers, 'Don't just look at my samples then give me your order. Please be sure to come to LHP to see the raw materials, production process and quality control of the products we produce on the assembly line.' We understand that under the influence of COVID-19, many customers can't come to China. LHP launch a special live video factory visit service. Just using your mobile phone, you can still person-ally verify whether LHP is the right factory for you before placing an order to us.

**COOPERATE WITH TIGER POWDER COAT,  
METAL WOOD GRAIN CHAIR CAN MAINTAIN  
THE GOOD LOOK FOR YEARS.**

It is impossible for a chair not to collide, especially for a commercial chair. These can lead to scratch & scuffs, causing both a bad first impression and costly furniture replacement. The wear resistance of surface treatment will be particularly important.

After testing the powders of different brands at home and abroad, we finally finalized the cooperation with Tiger Powder Coat. Tiger Powder Coat is an international famous powder coat brand which is professionally produced metal powder. The wear resistance is more than 3 times than the Chinese powder coat brands. Besides, Tiger Powder Coat is a green product, there are no lead, cadmium and other toxic substances. All these make the products more competitive. Now Yumeya's Metal Wood Grain Chair can easily deal with daily collisions. You will be surprised to find that LHP Metal Wood Grain Chair can maintain the good look for years.



## COOPERATE WITH AN HK DESIGNER, MAKE THE CHAIR AS WORKS OF AN ART THAT CAN TOUCH THE SOUL



reddot

## INNOVATION ABILITY CAN MAKE YOU MORE COMPETITIVE

### 01 Dou™-Powder Coat Technology

The shining effect of paint will make the chair look more upscale, especially in the banquet hall. But paint contains organic solvents, it is not environmentally friendly. Besides, paint scratches more easily. In order to solve the above problem, LHP launched Dou™-Powder Coat Technology in 2019. It combined the durability and Environmental performance of powder coat and the shining effect of paint.

When your competitors still hold the painted chair for promotion, you already hold the environmentally friendly and more wear-resistant Dou™-Powder Coat Technology chair, and you will have an advantage over your competitors

### 02 Diamond™ Technology

I believe you will have such an experience, when the leg by leg stacking chair were stacked for a period of time, there will be stacking marks left. This problem is caused by the insufficient hardness of the coating. Diamond™ Tecnology is to improve the hardness of the coating, so that there will be no any stacking marks left.

### 03 3D Metal Wood Grain Technology

Before 2018, people can only get the wood grain effect on the metal chair visually, but they can't get the wood grain texture tactile. Therefore, after years of research, LHP launched the world's first 3D wood grain technology in 2018. So far, people can get the wood look and touch in a metal chair. Now LHP had became a pioneer in the industry of metal wood grain and led the development of the industry.

### 04 Stack-able™ Technology

Whether it is shipping cost or storage cost, commercial furniture has a higher demand for stacking. There is no any problem for leg by leg chairs stacked more 8-10 pcs, but it is very impossible for seat by seat chairs stacked 8-10 pcs. But in LHP, through the continuous mining of all the parameters of the chair, we found a method to stack 8-10 sheets for seat by seat chairs. Now we can easily upgrade your chair to stack 8-10 pcs high to save 50-70% of transportation and storage costs, making you more competitive.

### 05 KD Technology

According to the forecast, the shipping cost will running at this historically high level for a long time in the future. How to load more products will directly reduce the overall cost and increase the competitive advantage. LHP KD Technology without changing the appearance but the loading QTY of a container will be double.

---

The ideal factory can not only give you good quality and service, but also grow together with you and constantly create more possibilities.

# LHP KD™ TECHNOLOGY CAN DIRECTLY DOUBLE THE LOADING AMOUNT OF A CONTAINER

COVID-19 directly increases the shipping cost by 5 times or even more. Do you have a headache that your customers are hesitant because of the high shipping cost?

According to the forecast, the shipping cost will running at this historically high level for a long time in the future. How to load more products will directly reduce the overall cost and increase the competitive advantage. Now we develop a new KD technology without changing the appearance but the loading QTY will be double. For example, LHPM006 and LHPM006-KD (Upgrade of LHPM006 that the seat and leg is KD.), it can help to save more than \$60.00 new technology.

	QTY of 40'HQ	FOB cost +Shipping cost per chair	Save
YSM006	290 pcs	\$59.2	\$28
YSM006-KD	550 pcs	\$31.2	



At present, we have realized the KD test of many different types of non stacking chairs, and the loading amount of a container has doubled, while the shape and strength of the chairs have not been affected. Another important point is that the installation is as simple as the installation the seat to the frame, even non professionals can do it easily.

We are welcome you share your best-selling styles with us to see how to improve the loading capacity and enhance your competitiveness.

# 10,000 CASES

More than 10000 successful cases in more than 80 countries and areas

After years of adherence to high-end quality and continuous innovation, LHP has reached cooperation with well-known brands in different industries, including:

- 01/ Hotel** Emaar Hospitably in Dubai, Disney in France / USA / Japan, Hilton, Marriott, Shangri La
- 02/ Cafe** Meixin Group in HK (the largest high-end catering group in Hong Kong), Il Cielo in Beverly Hills, LA (the most Romantic restaurants in LA)
- 03/ Fast Food Chain** Panda Express in USA (The largest Chinese food chain in USA)
- 04/ Wedding & Event** Zoom Art & Design in Qatar (the leading conferences, exhibitions and corporate events company in Qatar)

**05/ More...**

